

This Report was prepared for:

## Demographics Report

06/27/2011 01:28 PM

**510 EVERGREEN CRES**

**SPRINGFIELD**

PIN 222222222



**Anne Realtor**  
**Sales Representative**

**GeoWarehouse**  
123 Front Street  
Toronto, ON  
A1A1A1

**Phone** (555)-555-5555

**Fax** (555)-555-5556

**Home Page** [GeoWarehouse.ca](http://GeoWarehouse.ca)

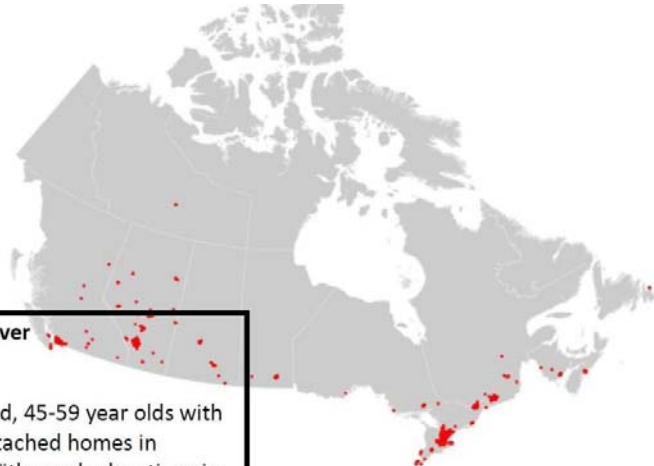
**Email** [Feedback@geowarehouse.ca](mailto:Feedback@geowarehouse.ca)

## Property Details - PIN: 222222222

Address	510 EVERGREEN CRES				
Municipality	SPRINGFIELD	LRO	200	Land Registry Status	ACTIVE
Registration Type	LT	Area	2,498 m2	Perimeter	207 m
Short Description	PT LTS 12 & 13, PL 343 , AS IN 764888 ; SPRINGFIELD				

## Dominant Market Group

### Platinum Playgrounds



**Calgary, Toronto, Edmonton & Vancouver  
Household 246,616**

*Urban gentry* defines this set of married, 45-59 year olds with school aged children living in single detached homes in established cosmopolitan locations. With good educations in law, life sciences, technology and business, they are employed as gold collar senior management or professionals in finance, health, and arts and culture professions. Earning incomes over three times the national average, careers are established and they seek to enhance their lifestyles. They will not hesitate to refine their homes with furnishings and professional cleaning or landscaping services. Focused on maintaining personal health and wellness, regular visits to physicians and dentists are key, as well as keeping memberships to health clubs and professional associations. Purchasing the latest fashions to maintain their stylish persona, whisking off for a vacation to enhance their global vision or escaping to their vacation property are all important aspects of their social being. They absorb the aesthetic pleasures of live shows and cultural performances, read a large selection of publications to keep informed and contribute substantially to their portfolios - especially children's education and retirement plans! Of European descent, with Jewish and Christian roots, they do not hesitate to share their wealth, contributing to charitable organizations.



Did you know?  
Toronto is home  
to the world's tallest  
building, The CN Tower

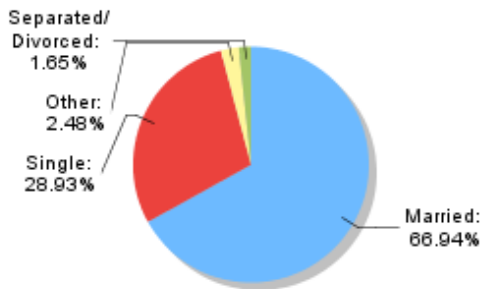
Did you know?  
Michael J. Fox  
was born in  
Edmonton, Alberta



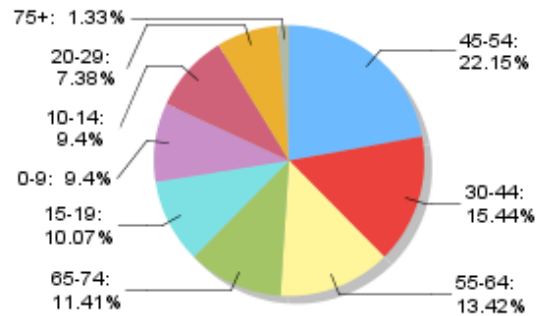
## Population

Male / Female	PC	FSA	City	Family	PC	FSA	City
Total Population	149	26,363	5,413,228	% >15 Years, Married with Children	23.14%	19.67%	17.11%
Males	50.34%	48.23%	48.61%	% >15 Years, Single with Children	1.65%	2.66%	5.50%
Females	49.66%	51.77%	51.39%				

**Marital Status**



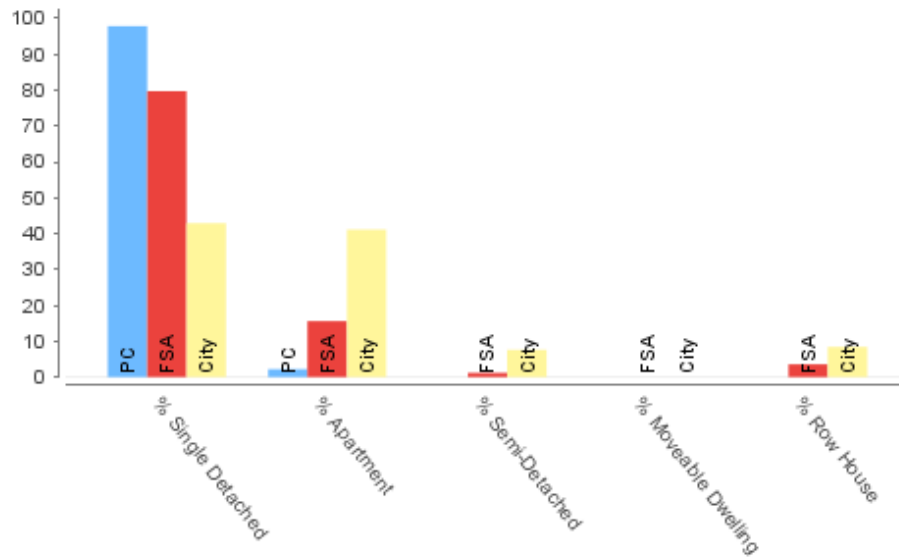
**Age Distribution**



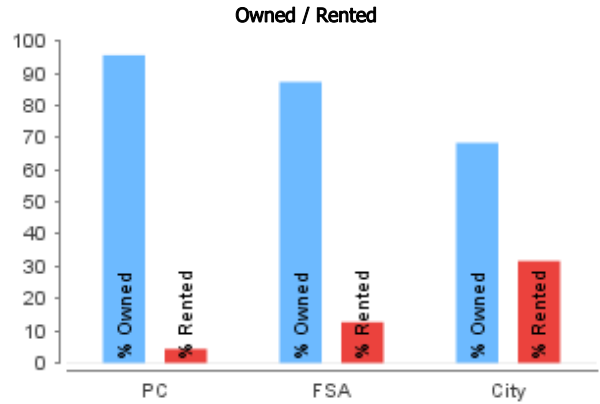
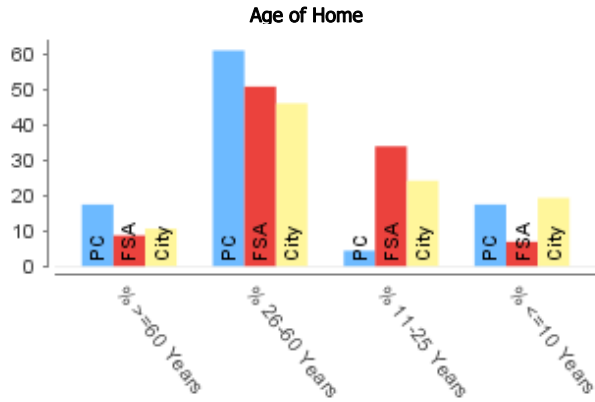
## Households

Structure Details	PC	FSA	City
Total Number of Occupied Private Dwellings	46	8,674	1,877,343
Average Number of Rooms	10.01	8.43	6.31
Average Number of Bedrooms	3.85	3.40	2.71
Average Rent	\$1,913	\$1,168	\$973

**Structural Type**

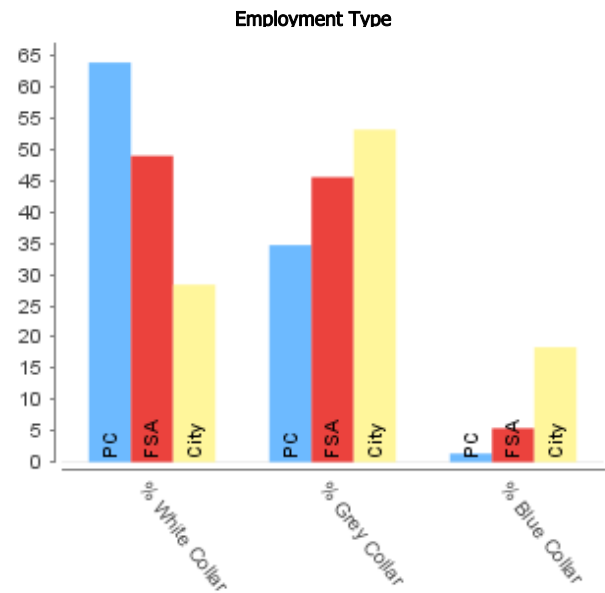
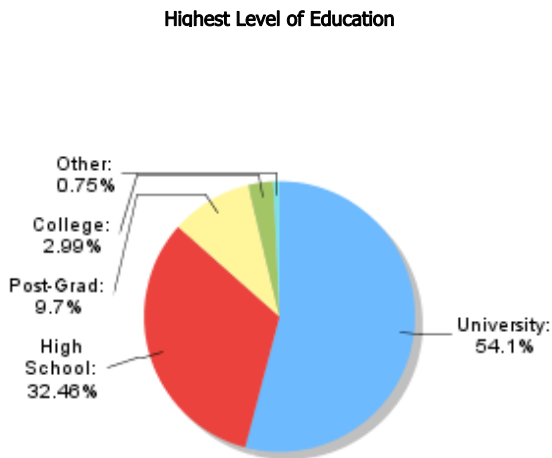
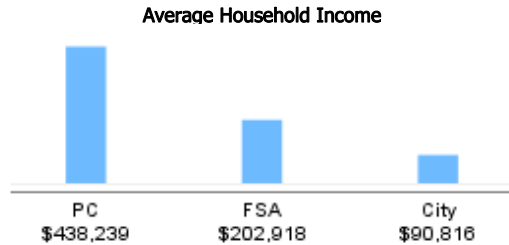


## Households (continued)



## Socio-Economic

Employment	PC
Employment Rate	52.89%
Unpaid Family Worker	0.00%
Dominant Profession #1	Management occupations 32%
Dominant Profession #2	Business, finance and administration occupations 28%



## Cultural

Language	PC	FSA	City
Dominant Language #1	English 98%	English 92%	English 71%
Dominant Language #2	Spanish 1%	Polish 1%	Cantonese 3%
Dominant Language #3	Italian 1%	Chinese, n.o.s. 1%	Chinese, n.o.s. 3%
Dominant Language #4	N/A	Cantonese 1%	Punjabi 2%
Dominant Language #5	N/A	Korean 1%	Italian 2%

Ethnicity	PC	FSA	City
Dominant Ethnicity #1	English 29%	English 19%	Chinese 11%
Dominant Ethnicity #2	Canadian 12%	Canadian 13%	East Indian 9%
Dominant Ethnicity #3	Scottish 12%	Scottish 11%	Canadian 9%
Dominant Ethnicity #4	East Indian 8%	Irish 9%	English 8%
Dominant Ethnicity #5	Italian 6%	Italian 6%	Italian 8%

Religion	PC	FSA	City
Dominant Religion #1	Anglican 26%	Roman Catholic 34%	Roman Catholic 35%
Dominant Religion #2	Roman Catholic 23%	Anglican 18%	No Religion 17%
Dominant Religion #3	No Religion 17%	United Church 15%	United Church 7%
Dominant Religion #4	United Church 14%	No Religion 14%	Anglican 7%
Dominant Religion #5	Presbyterian 6%	Presbyterian 3%	Muslim 5%

## Report Parameters

### Postal Codes Used

L1L1L1 , L2L2L2 , L3L3L3

**Reports Not the Official Record.** Reports, other than the Parcel Register, obtained through Geowarehouse are not the official government record and will not necessarily reflect the current status of interests in land.

**Currency of Information.** Data contained in the Geowarehouse reports are not maintained real-time. Data contained in reports, other than the Parcel Register, may be out of date ten business days or more from data contained in POLARIS.

**Coverage.** Data, information and other products and services accessed through the Land Registry Information Services are limited to land registry offices in the areas identified on the [coverage map](#).

**Completeness of the Sales History Report.** Some Sales History Reports may be incomplete due to the amount of data collected during POLARIS title automation. Subject properties may also show nominal consideration or sales price (e.g. \$2) in cases such as transfers between spouses or in tax exempt transfers.

**Demographic Information.** Demographic Information is obtained from Generation5 Mathematical Technologies Inc. Every year, Generation5 uses census, spending, and postal information to predict the demographic attributes of postal code in Canada.

The Property Information Services, reports and information are provided "as is" and your use is subject to the applicable Legal Terms and Conditions. Some information obtained from the Land Registry Information Services is not the official government record and will not reflect the current status of interests in land. Use of personal information contained herein shall relate directly to the purpose for which the data appears in land registry records and is subject to all applicable privacy legislation in respect of personal information. Such information shall not be used for marketing to a named individual.

Parcel Mapping shown on the site was compiled using plans and documents recorded in the Land Registry System and has been prepared for property indexing purposes only. It is not a Plan of Survey. For actual dimensions of property boundaries, see recorded plans and documents.

Copyright © 2002-2010 Teranet Enterprises Inc. and its suppliers. All rights reserved.